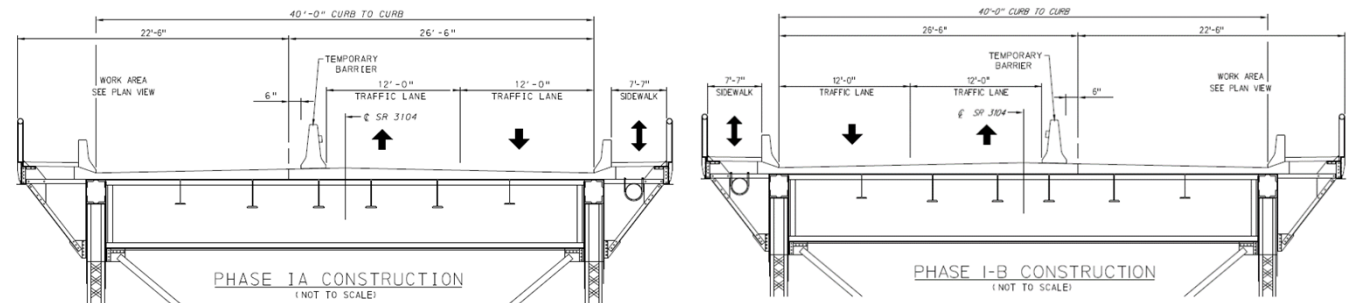


PROPOSED TRAFFIC CONTROL

- Lane Restrictions on the Bridge
 - A single lane of traffic will be maintained in each direction on the bridge during construction. Traffic will be maintained with a four-phased plan, with multiple sub-phases. Only one bridge sidewalk closure at a time will be permitted during construction. Pedestrians will be detoured to the open sidewalk on other side of the bridge.

Phase I-A: Two lanes (Westbound & Eastbound) on the south roadway of the bridge near the S.R. 51 intersection for construction on the northern portion of the western bridge.

Phase I-B: Two lanes (Westbound & Eastbound) on the north roadway of the bridge near the S.R. 51 intersection for construction on the southern portion of the western bridge.

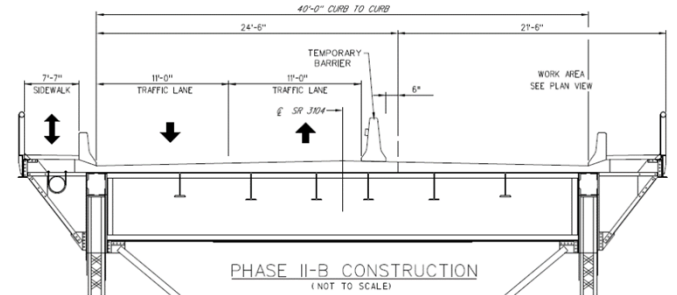
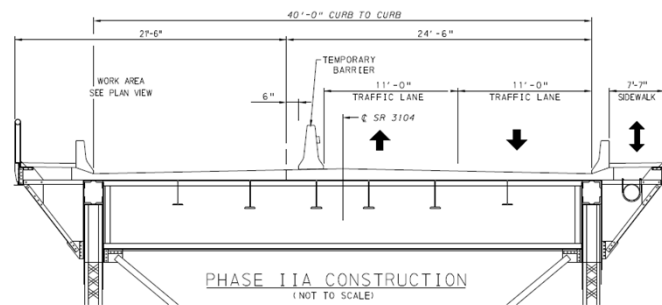
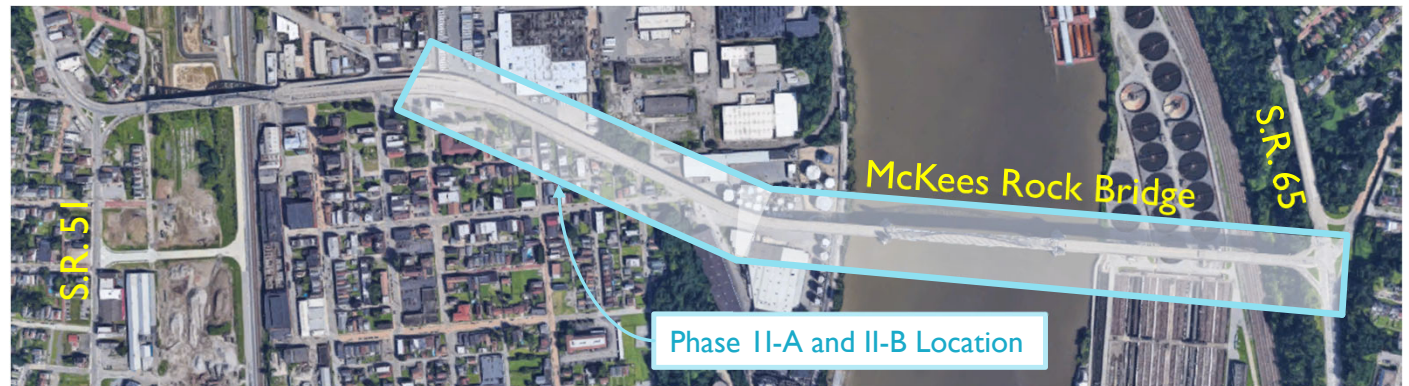


PROPOSED TRAFFIC CONTROL

- Lane Restrictions on the Bridge

Phase II-A: Two lanes (Westbound & Eastbound) on the south roadway of the bridge from the crossing with Helen Street to the S.R. 65 intersection for construction on the northern portion of the eastern bridge.

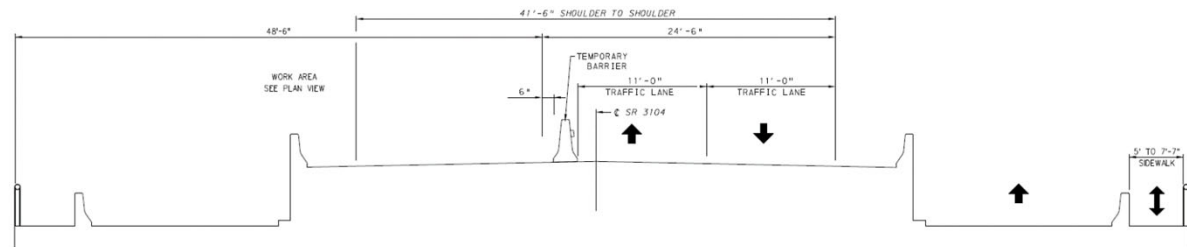
Phase II-B: Two lanes (Westbound & Eastbound) on the north roadway of the bridge from the crossing with Helen Street to the S.R. 65 intersection for construction on the northern portion of the eastern bridge.



PROPOSED TRAFFIC CONTROL

- Lane Restrictions

Phase III-A: Two lanes (Westbound & Eastbound) on the south roadway between the two bridges for mainline and ramp paving. A detour for the closed Helen Street Ramp will be implemented in this phase.



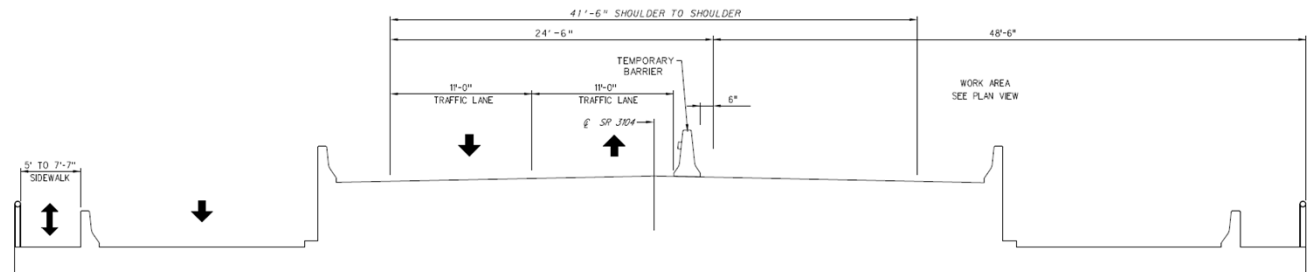
PHASE IIIA CONSTRUCTION
(NOT TO SCALE)

PROPOSED TRAFFIC CONTROL

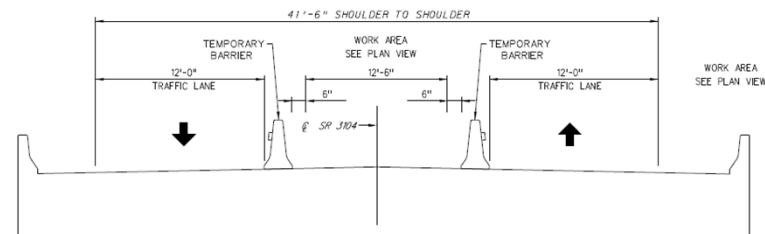
■ Lane Restrictions

Phase III-B: Two lanes (Westbound & Eastbound) on the north roadway between the two bridges for mainline and ramp paving. A detour for the closed Helen Street Ramp will be implemented in this phase.

Phase III-C: Two split lanes (Westbound & Eastbound) with center construction for mainline paving and approach slab construction.



PHASE IIIB CONSTRUCTION
(NOT TO SCALE)

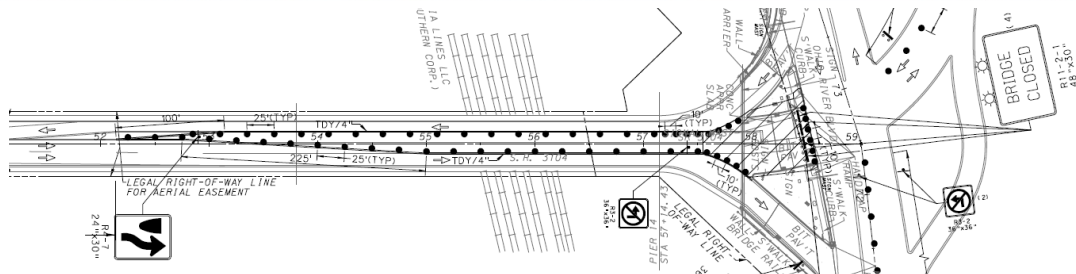
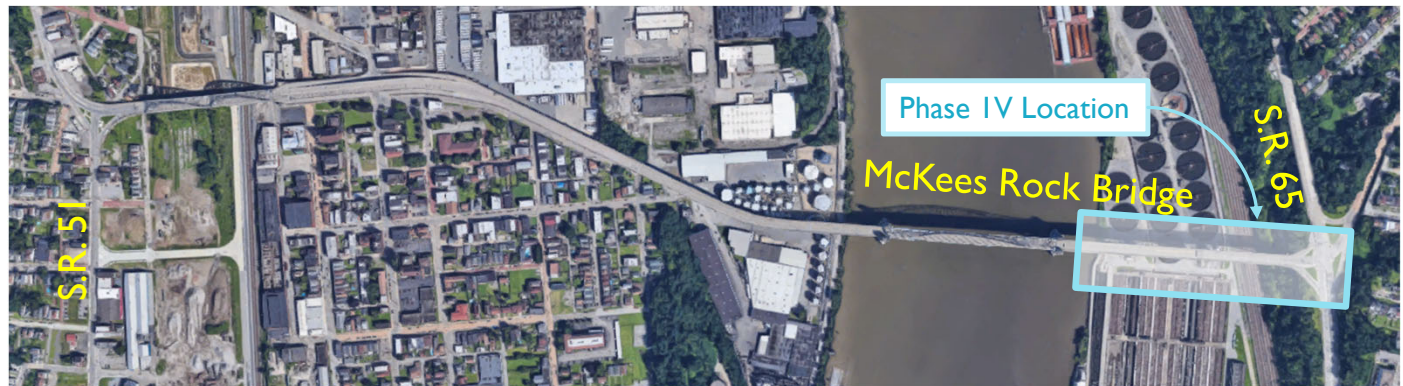


PHASE IIIC CONSTRUCTION
(NOT TO SCALE)

PROPOSED TRAFFIC CONTROL

- Lane Restrictions on the Bridge

Phase IV: Two split lanes (Westbound & Eastbound) with center construction for mainline paving and approach slab construction. Movements from S.R. 65 South onto the bridge and from the bridge to S.R. 65 North will need to follow a detour during this phase.




HELEN STREET PHASE III-A/III-B AND S.R. 65 PHASE IV DETOUR ROUTING

**Traffic Detour Required
for All Traffic Except
Emergency Vehicles**

Detour Length – 5.6 miles

 SR 3104 Work Area
Helen Street Phase III-A/III-B

 SR 3104 Work Area
S.R. 65 Phase IV

 Detour Route

